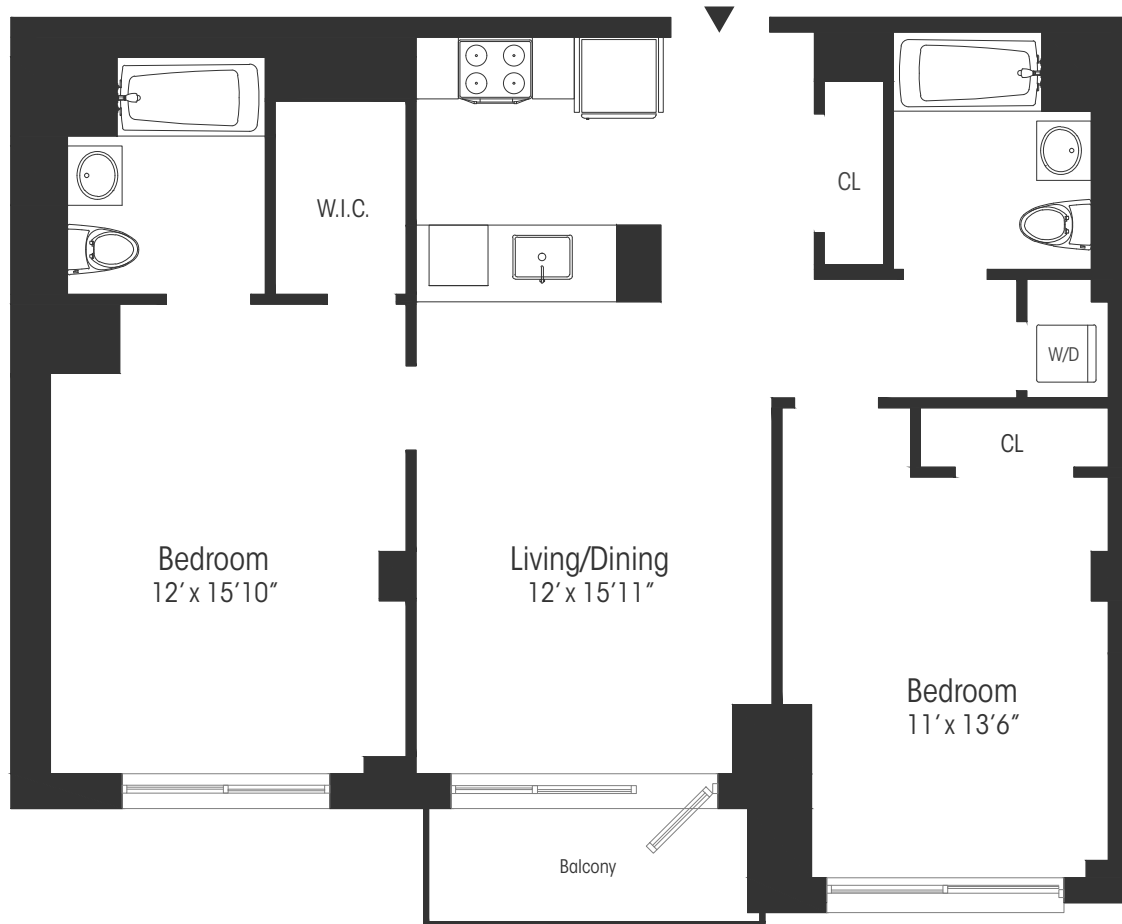


# 2 Bed 2 Bath 20 Line



✓ Northern Exposure

## Apartment Features

- Dark oak flooring throughout
- Oversize windows and intergrated shades
- Kitchens featuring Frigidaire Professional
- Series stainless steel appliances, Grohe and Kohler faucets and fixtures, white quartz countertops, full-height backsplashes, and custom modern cabinetry
- Bathrooms featuring Grohe and Kohler faucets and fixtures, and custom quartz vanities
- Bosch washer & dryer in each residence
- Private outdoor space in most residences



Astoria NY, 11106 • 718.956.1112

All dimensions are approximate and subject to construction changes and omissions. Plans and dimensions may also contain minor variations from floor to floor.

Exclusive Marketing & Leasing Agent: Douglas Elliman Development Marketing

